

# *Technology in the Library*

Presented by Lisa Boone  
The Aroga Group

Live. Learn. See. Communicate.  
**Aroga**  
[www.aroga.com](http://www.aroga.com)

The Aroga Group

**Live.  
Learn.  
See.  
Communicate.**

Live. Learn. See. Communicate.  
**Aroga**  
[www.aroga.com](http://www.aroga.com)

# The Aroga Group

## Solutions for

- Low Vision / Partially Sighted
- Blindness
- Physical Disabilities
- Learning Disabilities
- Communication Disorders

# The Aroga Group

Established in 1987

Core Knowledge Base – collectively over  
100 years of experience

Known throughout Canada for expertise  
in assisting in implementing Assistive  
Technology

Dedicated staff to ensure the right  
purchase

## What is an Accessible Library?

Wheelchair ramps

Automatic doors

Wider aisles

Large Print Books

Audio Books

Accessible washrooms

Wheelchair accessible tables/counters

**any item, piece of equipment, or product system, whether acquired commercially or off the shelf, modified, or customized, that is used to increase, maintain, or improve functional capabilities of individuals with disabilities.**

## Alternative Input Products

Alternative input devices or software to enable an individual access to a computer other than traditional keyboard and mouse

– Often used by individuals with physical disabilities, either congenital, injury, or aging.

- Limited mobility due to a physical impairment (i.e. arthritis, Multiple Sclerosis, muscular dystrophy, cerebral palsy, amputation, stroke.)

## Alternative Devices

Alternative Keyboards

Alternative Mice

Touch Screens

On Screen Keyboards

Switches

# Alternative Keyboards

BigKeys with keyguard  
(1 inch key)

Datalux Spacesaver

Membrane Keyboards

# Alternative Keyboards



# Alternative Mice

Trackballs

Joysticks

BIGtrack

HeadMouse Extreme

Switches

Live. Learn. See. Communicate.  
**Aroga**  
www.aroga.com

# Trackball and Joysticks

Built by major aerospace company  
Partial or full plate for accurate  
access

Recessed buttons for click & drag  
features

Full model has 5 mouse speeds &  
ports to plug in ability switches

Available for all computer system.

Trackball recessed, better traction



Live. Learn. See. Communicate.  
**Aroga**  
www.aroga.com

## EXTRA LARGE TRACKBALL

3 inch trackball which makes it the largest trackball available.

Large ball requires less fine motor control than a standard trackball and it is ruggedly built.

It has a left and a right mouse click button located behind the trackball to avoid unwanted mouse clicks.

The BIGtrack also allows for 2nd Mouse Connection both the BIGtrack and a second mouse can be connected allowing simultaneous participation.

Offered with switch adaptor



## EXTRALIGHT

Uses Infrared signals

User wears a reflective dot

Interfaces with PC's,  
IBM & Mac

Mouse Button clicks are  
via Dragger Software,  
switch, or voice  
recognition

Portable & light weight



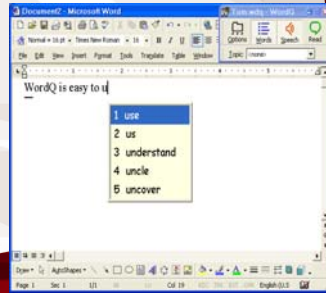
## Software Solutions

Word Prediction  
Voice Output  
Voice Recognition  
On-Screen Keyboards

## Software Available

WordQ  
WiVox-Speech Output Software  
WiViK on-screen keyboard & Scan  
Package  
Softype on-screen keyboard  
Dragger Autoclick Software  
Dragon NaturallySpeaking

Word Completion and next word prediction  
Individual customizable and self-adapting vocabulary  
Dictionary for spell checking  
Echoes typing with speech  
Reads text aloud within all applications



## On-Screen Keyboards

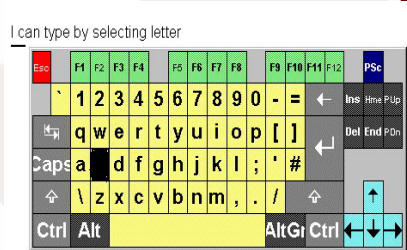
### DiscoverPro

Software to provide on-screen keyboards and switch scanning



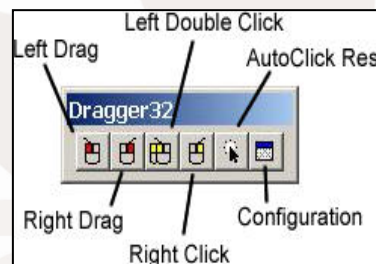
## Microsoft Scan Package

- Customizable Scanning on-screen keyboard
- Word prediction and abbreviation -expansion options
- Allows up to 5 single switches or multi switch interface
- Ability to design custom keyboards



## Microsoft Dwell

- Dwell software
- Provides all button click & drag features
- Stand alone or with on-screen keyboard
- Can be used with any mouse or alternative





## Low Vision Solutions

Devices or software to enable a partially sighted individual to print &/or technology to avoid eye strain

- Typically used by partially sighted individuals, either congenital, injury or due to aging
- What do partially sighted individuals see?

Refer to

[www.low-vision.org/?dispage=10](http://www.low-vision.org/?dispage=10)

## Low Vision Solutions

### Portable Solutions

- Amigo
- Max
- Flipper Panel
- Jordy

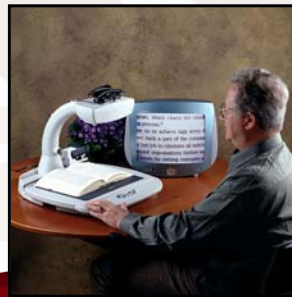
### Stand Alone

- Merlin LCD
- Computer Split Screen
- TV / VGA

## CCTVs - In All Shapes & Sizes



Flipper  
Amigo  
Merlin  
Jordy



Live. Learn. See.  
**Aroga**  
www.aroga.com

Reads DAISY files, which is a file format created in a recording studio utilizing chapters, sections, pages.

Easier to navigate for users

User friendly

Live. Learn. See. Communicate.  
**Aroga**  
www.aroga.com

# Computer Solutions

- Larger Display Monitors
- Large Print Keyboards
- Computer Integrated CCTV systems
- Screen Magnification Software
- Print Scanning/Reading Systems
- Screen Readers

Live. Learn. See. Communicate.  
**Aroga**  
www.aroga.com



**enhanced**  
**vision**



smooth sailing is a  
deep blue ocean ca  
reeze is refreshing



## Windows Magnifier

- Magnifies text and graphics on the computer screen 1.2-36x
- Optional speech output
- Text smoothing and font enhancements
- Mouse & Cursor enhancements
- Specific tools for reading & quickly finding information on the web or PC
- Compatible with all versions of Windows & applications

- JAWS is the most popular & powerful screen reader with unparalleled support for refreshable Braille displays
- Contains tutorials for popular applications like Excel, Word, Outlook, Internet Explorer
- Provides access to all software applications, email & internet
- Can be used by low vision or blind individuals

## Systems

- Reads & manages scanned images from a variety of print formats
- Includes wide variety of productivity tools;  
Accessible Photocopier, Fax, MP3 Creator
- Low Vision Enhancements
- Screen Reader included to read docs.
- Dictionary, Thesaurus, & literacy tools
- ~OPENBook ~ Kurzweil 1000 ~ SARA

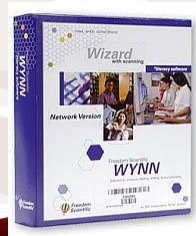
## Learning Goals

- Software and hardware devices used by individuals who struggle with reading and writing
- Used by individuals with a Learning Disability, ESL, and those whom may have never had the opportunity to learn how to read.

# Barriers to Literacy

## Text to Speech

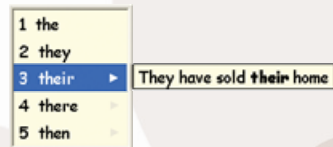
- Read & Write Gold
- Kurzweil 3000
- WYNN Wizard
- PREMIER Technologies



# Aids to Writing

## Word Prediction

- Predictor Pro
- WordQ 2



Thank you!!  
Questions?  
Contact Aroga  
1 877 274 0044  
Or  
edmonton@aroga.com

Live. Learn. See. Communicate.  
**Aroga**  
www.aroga.com